

WINNIE

– Compact your spotlight designs

The new WINNIE family from LEDiL features unique folded TIR design which substantially reduces height compared to traditional collimating optical designs. WINNIE features convenient MR16 size for a range of luminaire or retrofit designs and can be used with heat sinks pre-drilled for Zhaga compatible light engines. Highly efficient design, typical efficiency close to 90%.

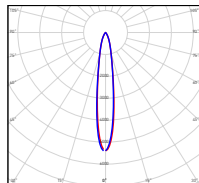
- PMMA lens for a range of COB's with LES size up to 21 mm
- Hyper-reflective white PC holder and

optical grade PMMA for high efficiency

- Unique flat folded TIR design
- Zhaga Book 3 compatible fastening – pre-drilled heatsink available
- Designed to work with the range of COBs from brands like Cree, Citizen, Osram and Bridgelux
- Typical applications include tracklights, downlights and general interior architectural lighting

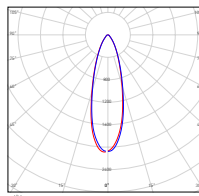
CN14236_WINNIE-S

- H: 19,3 mm, D: 49,8 mm
- Beam type: Spot
- Typical FWHM 22°
- Typical efficiency 87%
- Precision-molded from optical grade PMMA – UL94 HB rated material with operating rating -40°C to +80°C



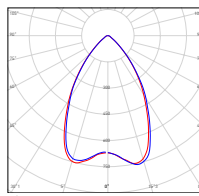
CN14237_WINNIE-M

- H: 19,3 mm, D: 49,8 mm
- Beam type: Medium flood
- Typical FWHM ≈ 35°
- Precision-molded from optical grade PMMA – UL94 HB rated material with operating rating -40°C to +80°C

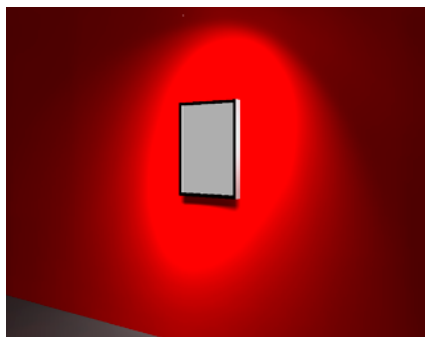
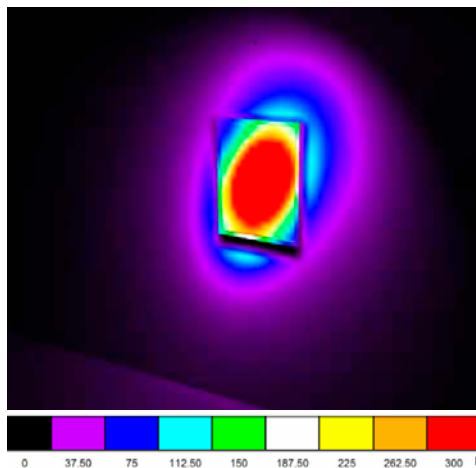


CN14238_WINNIE-W

- H: 19,3 mm, D: 49,8 mm
- Beam type: Wide flood
- Typical FWHM ≈ 50°
- Precision-molded from optical grade PMMA – UL94 HB rated material with operating rating -40°C to +80°C



APPLICATION EXAMPLE



Painting illuminated with WINNIE-S

- Luminaire installed 95 cm from the back wall
- Luminous flux (luminaire): 419 lm
- Luminaire wattage: 4.8 W