

μMaxpm® II Digital Comparator



Features

Standard Functions:

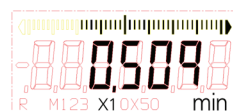
- Inch/Metric – operator selectable with switchable resolution.
- Normal / Reverse Sensing
- Preset capabilities to view actual size.
- "Absolute" Transducer – no overspeed errors or constant re-zeroing. Transducer always remembers its location, even if power is off.
- High resolution digital readout and analog bar graph – digital display shows deviation from zero or actual dimension size (Preset).
- Lightweight, contamination resistant – ruggedly built to withstand hard use – gasketed case, crystal and stem assemblies resist fluid contamination.
- Calibratable – if ever needed – values remembered even after battery change.
- Marconnect data output: USB, OPTO RS232C, Digi-matic
- Auto-power down – provides extremely low battery consumption, assuring long life from readily available commercial batteries.
- Increased resolution (0.0002mm / 10uinch) for today's demanding tolerances.
- Unilateral Tolerances
- Go/NoGo Display Feature

Advanced Functions:

- Dynamic mode operation:
 - Max, Min, TIR
- Two point difference measurement – provides comparison of two readings or measuring locations.
- - Calculate the distance between 2 measured values
- Multiplier factor for ratio measurements
- Hold function – holds reading on display until ready to resume measuring
- Data output with serial number identification capability
- Data output with selectable continuous output
- or single request of reading(s)

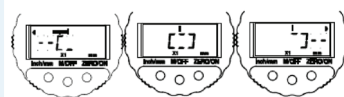
Mode A:

Actual value + bargraph
Display of tolerance



Mode B:

GO/NOGO display



Optional Factory Configured Features:

- Locked Multiplier factor for ratio measurements
- Disabled sleep mode (manual on/off)
- Locked inch or mm display unit
- Power up in inch or mm unit on battery change
- Calibration mode lockout
- Setup mode lockout with password entry

Ordering Information

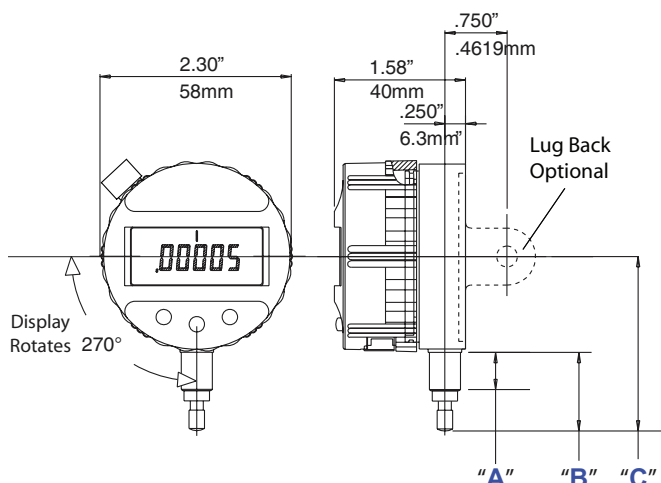
Model	Range mm / inch	Resolution mm / inch	Accuracy % of digital range	Stem diameter	Stem Length	Order no.
Standard	±1.00 / ±0.040"	0.0002 / 0.00001"	±0.25% over ±0.50mm / ±0.020" ±0.50% from ±0.50mm / ±0.020" to ±1.00mm / ±0.040"	0.375"	11.7mm / 0.46"	2034101
Standard		0.0005 / 0.00002"		0.375"	38.0mm / 1.50"	2034103
Standard		0.001 / 0.00005"		8mm	11.7mm / 0.46"	2034105
Standard		0.002 / 0.00001"		8mm	38.0mm / 1.50"	2034107
Advanced		0.005 / 0.00002"		0.375"	11.7mm / 0.46"	2034201
Advanced		0.01 / 0.0005"		0.375"	11.7mm / 0.46"	2034203
Advanced	Advanced Perpendicular	0.02 / 0.001"		0.375"	38.0mm / 1.50"	2034205
Advanced				8mm	11.7mm / 0.46"	2034207
Advanced				8mm	38.0mm / 1.50"	2034401

Technical Data

Display Range:	±0.042in ±1.067mm
Spindle Range:	-0.050 to +0.060in. -1.25 to 1.50mm
Resolution:	0.00001in 0.0002mm
Accuracy: (% of range)	±0.020" range: 50μin (0.25%) ±0.040" range: 200μin (0.50%) ±0.5mm range: 1.25μm (0.25%) ±1.0mm range: 5.0μm (0.50%)
Gaging Force:	3 to 4 oz (ounce) - 85 to 122 g (grams) - - at center of travel
Weight:	6 oz 170 g
Spindle Velocity:	Unrestricted
Temperature Operating:	40° to 130°F 5° to 54°C
Storage:	0° to 140°F -17° to 60°C
Repeatability:	± 1 LSD (Least Significant Digit)
Battery Life:	6000 hours ~ 12 months normal usage*
Contact Point:	(PT-223 radiused tip, 4-48 thread, furnished on 0.375" dia. Stem model) EPT-1037-W1 radiused tip, M2.5 thread furnished on 8mm dia. stem model
Power:	3 volt lithium coin cell (2 per unit), type CR 2450. Order#: EBY-1018
Display:	Rotates through 270°

*normal usage= 12 hr/day x 7 day/wk

Standard Model

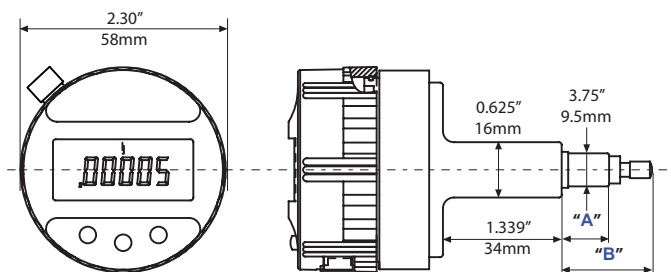


For contact points please refer to pages 5-25, 5-27, 5-25 & 5-53

**Optional

Dimensions mm / inch	A	B	C
	11.7 / 0.46"	24.1 / 09.5"	53.6 / 2.11"
	38.0 / 1.50"	57.2 / 2.25"	86.6 / 3.41"

Perpendicular Model



Accessories

	Order No.		Order No.
Backs:		Other Hardware:	
Flat Back (Standard on all models)	EBK-1018	Splash Cover	ECV-1307-W2
Lug Back (Horizontal / Vertical)	EBK-1010	Adaptor Bushing (8mm to 3/8")	BU-197
Post Back (0.5" dia. x 1" long)	EBK-1012	Thread Adaptor (M2.5 to 4-48 thread)	AD-185
Screw Back (11/16" dia x 0.5", 1/4-28 thread)	EBK-1013	Spring (for lighter gaging force: 35g)	SP-351
Adj. Slide Back (0.5" slot, 1/4-20 thread)	EBK-1016		
Adj. Rack Back*	EBK-1014		
		For other mounting accessories refer to page 6-13	
Data Interface:			
USB Cable (for MarCom or PC, 2m length)	4346023		
RS232 Cable (10pin plug, 2m length)	4346020		
Digimatic Cable (10pin plug, 2m length)	4346021		
Transmitter (Mahr t, used w/ FM1 Receiver)	2121369		