

Dial Indicators per ANSI/AGD Group 0 - Mahr Federal Series A and N

Features

Where available space prohibits the use of a larger dial indicator.



Technical Data

Mahr Federal Series A (inch)

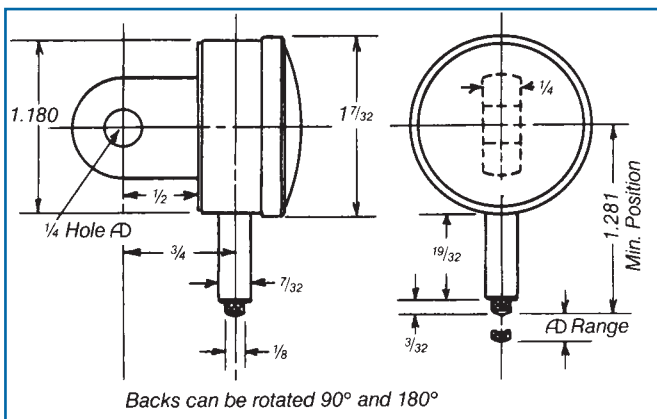
Dial: approx. 1.250in dia. with soft-green tint

Measuring range	Graduation value	Dial style	Range per revolution	Accuracy	Order number
.010"	.0001"	0-2-0	.004"	±.0001"	A1/2Q
.025"	.0001"	0-5-0	.010"	±.0001"	A2I
.050"	.0005"	0-10-0	.020"	±.0005"	A3Q
.100"	.001"	0-20-0	.040"	±.001"	A6Q

Mahr Federal Series N (Metric – mm)

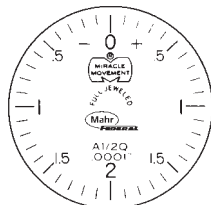
Dial: approx. 32mm dia. with soft-yellow tint

0.250	0.002	0-5-0	0.100	±0.002mm	N1/2O
1.250	0.005	0-25-0	0.500	±0.005mm	N3I
2.500	0.010	0-50-0	1.00	±0.010mm	N6I



Dial Indicators per ANSI/AGD Group 0 - Mahr Federal Series A and N

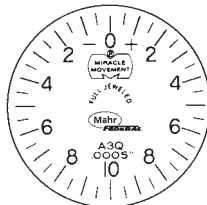
Mahr Federal Series A



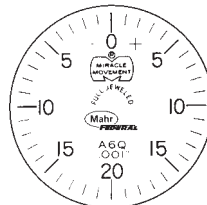
A1/2Q



A2I

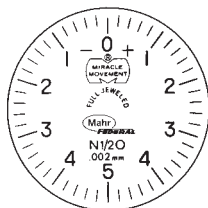


A3Q

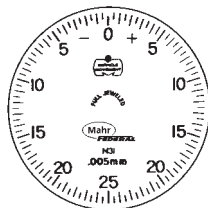


A6Q

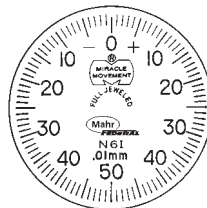
Mahr Federal Series N



N1/20



N3I

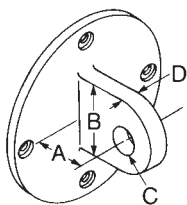


N6I

- Normally furnished: balanced dial with + on right; centered vertical lug back; regular contact point, .09in radiused, .093in long.
- Optional dials: balanced with + on left; continuous clockwise; continuous counter-clockwise. Order by part number and specify dial style desired.
- For other dial styles or special requirements, call Mahr Federal.

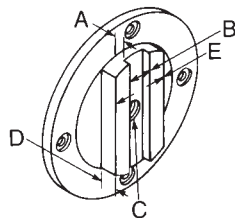
Backs for ANSI Group 0 - Series A and N

Vertical (Centered) Lug Back is normally furnished and included in price of Indicator. Back can be rotated 90° for horizontal lug mounting.



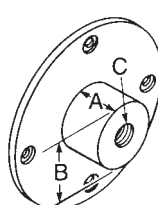
Vertical Lug
(Centered)
BK-37

A B C D
1/2 11/16 1/4 1/4



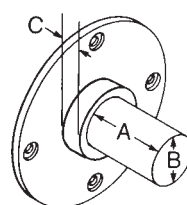
Adjustable
BK-45

A B C D
1/8 3/8 8-32 1/4



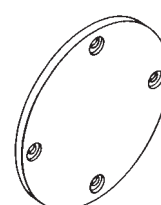
Screw Type
BK-88

A B C
1/2 11/16 1/4-28



Post
BK-38

A B C
5/16 7/32 1/16



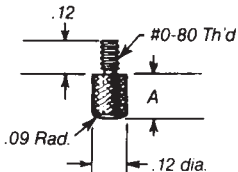
Flat
BK-32

Split Bushing, BU-112 Fits Stem (.218in I.D. x .375in O.D.), .500in long.



Points for ANSI Group 0 - Series A and N

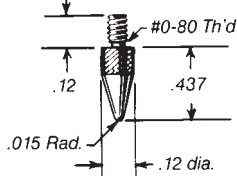
Regular
PT-43
normally
furnished



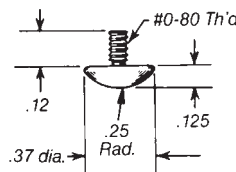
Dim. A Style

3/32" PT-43
1/4" PT-204
3/8" PT-205
1/2" PT-207
5/8" PT-208
3/4" PT-209
7/8" PT-210
1" PT-211

Taper
PT-119



Button
PT-118



Flat
AL-61

